

# Schedule A

1. The following textual amendments are made to the Municipal Development Plan Bylaw No. 1644 as outlined below:
  - I. That Section 2.0 Land Development, subsection 2.1.1(13) Area Structure Plans, is amended as follows (text to be deleted identified in ~~strikethrough~~; text to be added identified in underline):
    13. After first reading has been received, staff shall circulate the ASP to government agencies, utilities, ~~and~~ adjoining property owners, and the MD of Willow Creek, when appropriate.
  - II. That Section 2.0 Land Development, subsection 2.1.1 Area Structure Plans, is amended by adding the following text to the end of the section:
    18. Upon adoption of the ASP, the applicant shall provide Town staff with digital CAD files and an editable electronic version of the approved plan and supporting documents, in a format acceptable to the Municipality.
  - III. That Section 3.0 Residential Development, subsection 3.4 Policies, Policy 3.4.7(b) is amended as follows (text to be deleted identified in ~~strikethrough~~; text to be added identified in underline):
    - 3.4.7(b) where traffic, generated by the development, will not affect the traffic patterns of other residential districts. This will be achieved ~~though~~ through access management policies in the Transportation section of this document.
  - IV. That Section 3.0 Residential Development, subsection 3.4 Policies, Policy 3.4.25 is amended as follows (text to be deleted identified in ~~strikethrough~~; text to be added identified in underline):
    - 3.4.25 In accordance with Policy ~~#PLDE-09-16~~ 5.6.15, the Town, its citizens and developers will pursue a street tree program for the replacement of aging street trees within the urban forest and the installation of new street trees in new residential development areas.
  - V. That Section 10.0 Environmental Stewardship, subsection 10.4 Policies, Policy 10.4.13 is amended as follows (text to be deleted identified in ~~strikethrough~~; text to be added identified in underline):
    - 10.4.13. New developments will incorporate ecologically conscious design and shall consider the long-term progression of streetscapes with specific attention to landscaping and street trees (Policy ~~#PLDE-09-16~~ 5.6.15).
  - VI. That Municipal Development Plan, Appendix A - Historical Overview, Geographic Setting and Land Use Backgrounds, Annexation History is amended as follows (text to be deleted identified in ~~strikethrough~~; text to be added identified in underline):

## Annexation History

Since incorporation as a town in 1905 and as listed below, the Town of Claresholm has experienced ~~eight (8)~~ nine (9) annexations (see Appendix A, Figure 1).

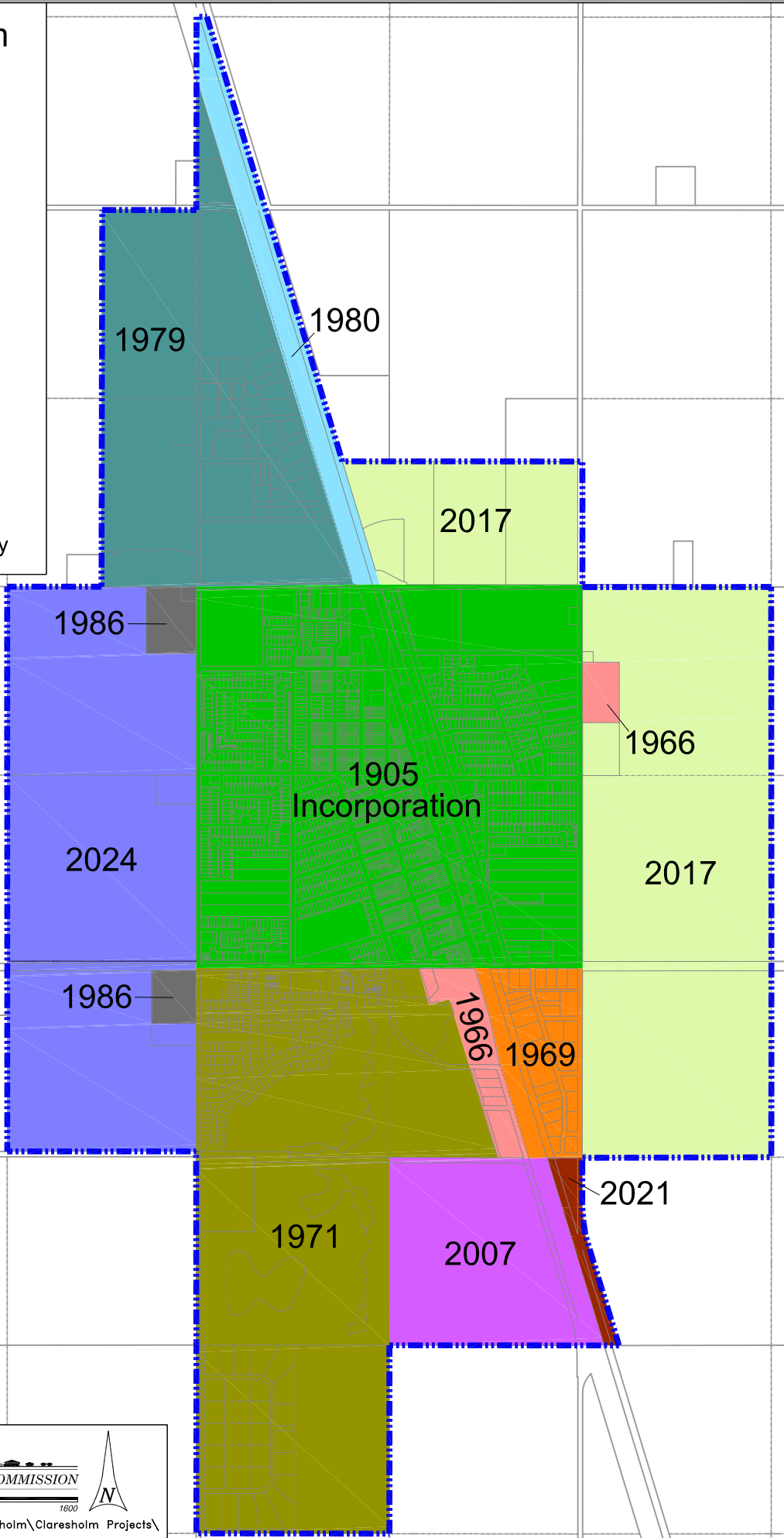
ANNEXATION BOARD ORDERS	
<b>1966</b>	Board Order 2191 (Effective Date: January 1, 1966).
<b>1969</b>	Board Order 4036 (Effective Date: January 1, 1969).
<b>1971</b>	Board Order 5042 (Effective Date: January 1, 1971).
<b>1979</b>	Board Order 10783 (Effective Date: January 1, 1979).
<b>1980</b>	Board Order 12882 (Effective Date: January 1, 1980)
<b>1986</b>	Board Order 18093 (Effective Date: December 31, 1986)
<b>2007</b>	Order in Council 235/2007 (Effective Date: January 1, 2007)
<b>2017</b>	Municipal Government Board Order in Council 004/2017
<b>2024</b>	<u>Order in Council 213/2023 (Effective Date: January 1, 2023)</u>

2. That Municipal Development Plan, Appendix A - Historical Overview, Geographic Setting and Land Use Backgrounds, Figure 1: Annexation History, be deleted and replaced by the updated Figure 1: Annexation History attached in Schedule B.
3. That Municipal Development Plan, Appendix C – Maps, Maps 1–10, be deleted and replaced by the updated maps attached in Schedule C.
4. That the community photos in the Municipal Development Plan be replaced with updated photos.

## **Schedule B**

# Town of Claresholm Annexation History

- 1905 Incorporation
- 1966 Annexation
- 1969 Annexation
- 1971 Annexation
- 1979 Annexation
- 1980 Annexation
- 1986 Annexation
- 2007 Annexation
- 2017 Annexation
- 2021 Annexation
- 2024 Annexation
- Current Town Boundary







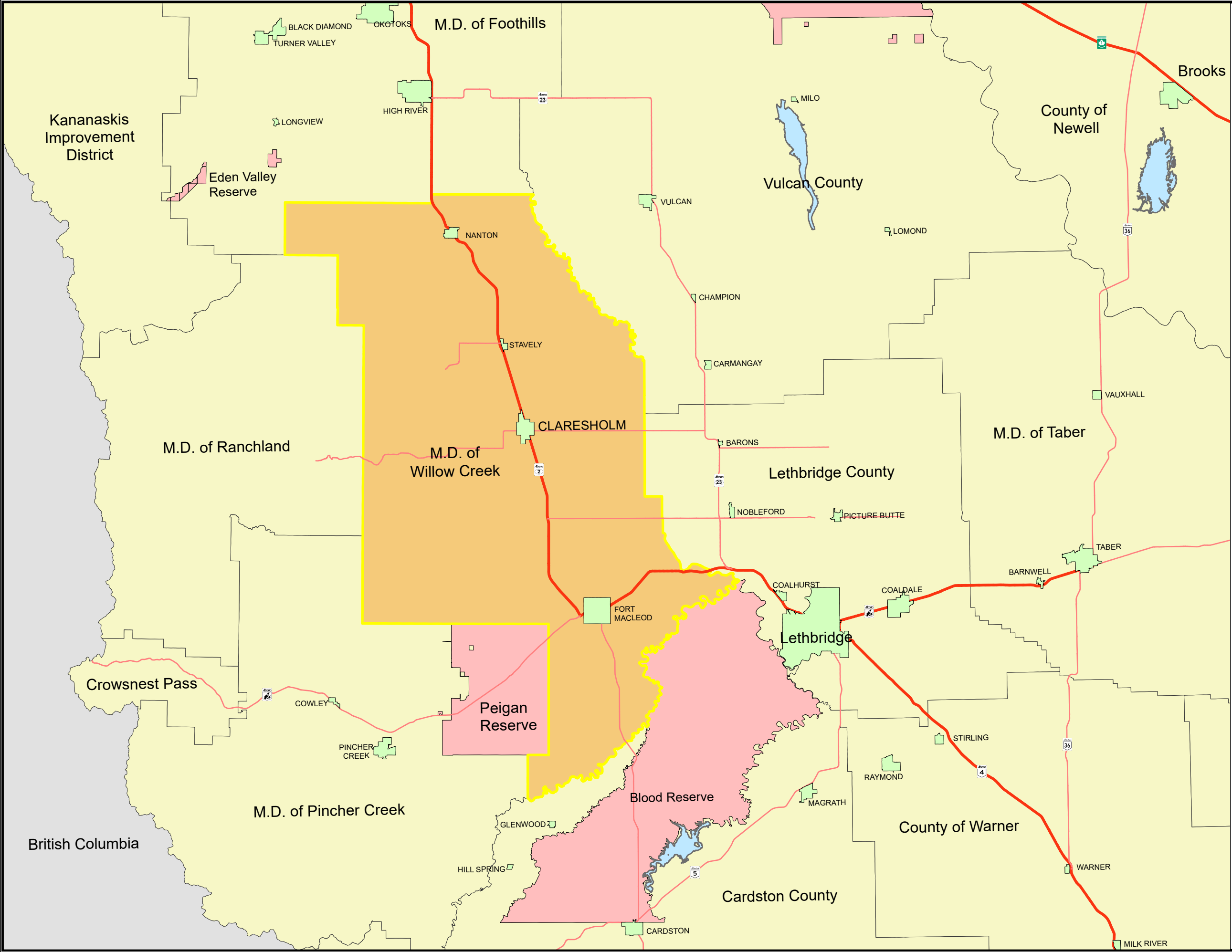
## **Schedule C**

**TOWN OF CLARESHOLM  
MUNICIPAL DEVELOPMENT PLAN  
BYLAW NO. 1644  
REGIONAL LOCATION MAP**

**MAP 1**



-  Town of Claresholm
-  Municipal District of Willow Creek
-  Major Highway
-  Minor Highway



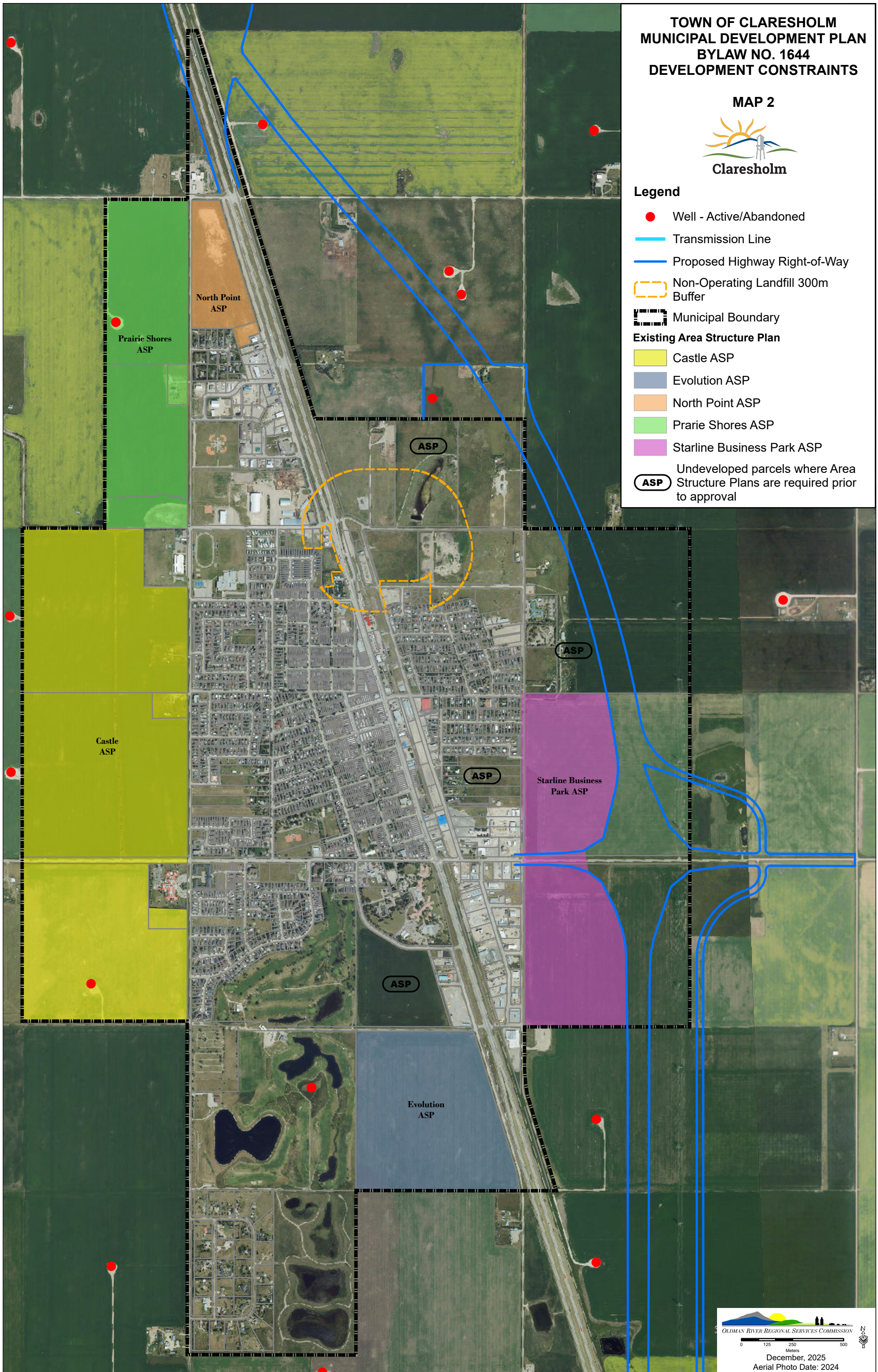
**TOWN OF CLARESHOLM  
MUNICIPAL DEVELOPMENT PLAN  
BYLAW NO. 1644  
DEVELOPMENT CONSTRAINTS**

**MAP 2**



**Legend**

- Well - Active/Abandoned
- Transmission Line
- Proposed Highway Right-of-Way
- Non-Operating Landfill 300m Buffer
- Municipal Boundary
- Existing Area Structure Plan**
- Castle ASP
- Evolution ASP
- North Point ASP
- Prairie Shores ASP
- Starline Business Park ASP
- ASP Undeveloped parcels where Area Structure Plans are required prior to approval






TOWN OF CLARESHOLM  
 MUNICIPAL DEVELOPMENT PLAN  
 BYLAW NO. 1644  
 LAND USE IN TOWN

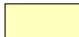


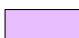

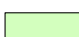
MAP 3

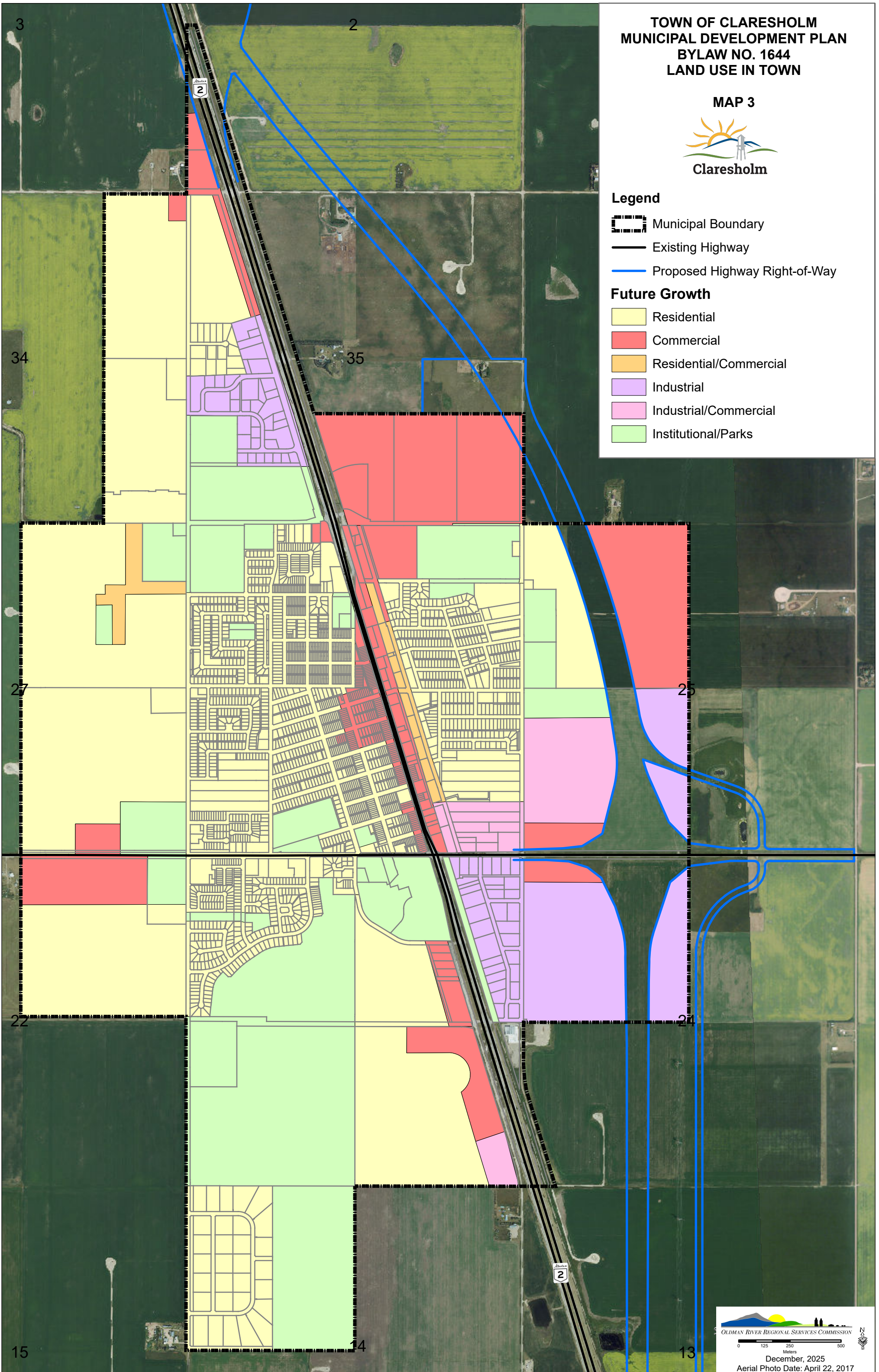


Legend

-  Municipal Boundary
-  Existing Highway
-  Proposed Highway Right-of-Way

Future Growth

-  Residential
-  Commercial
-  Residential/Commercial
-  Industrial
-  Industrial/Commercial
-  Institutional/Parks



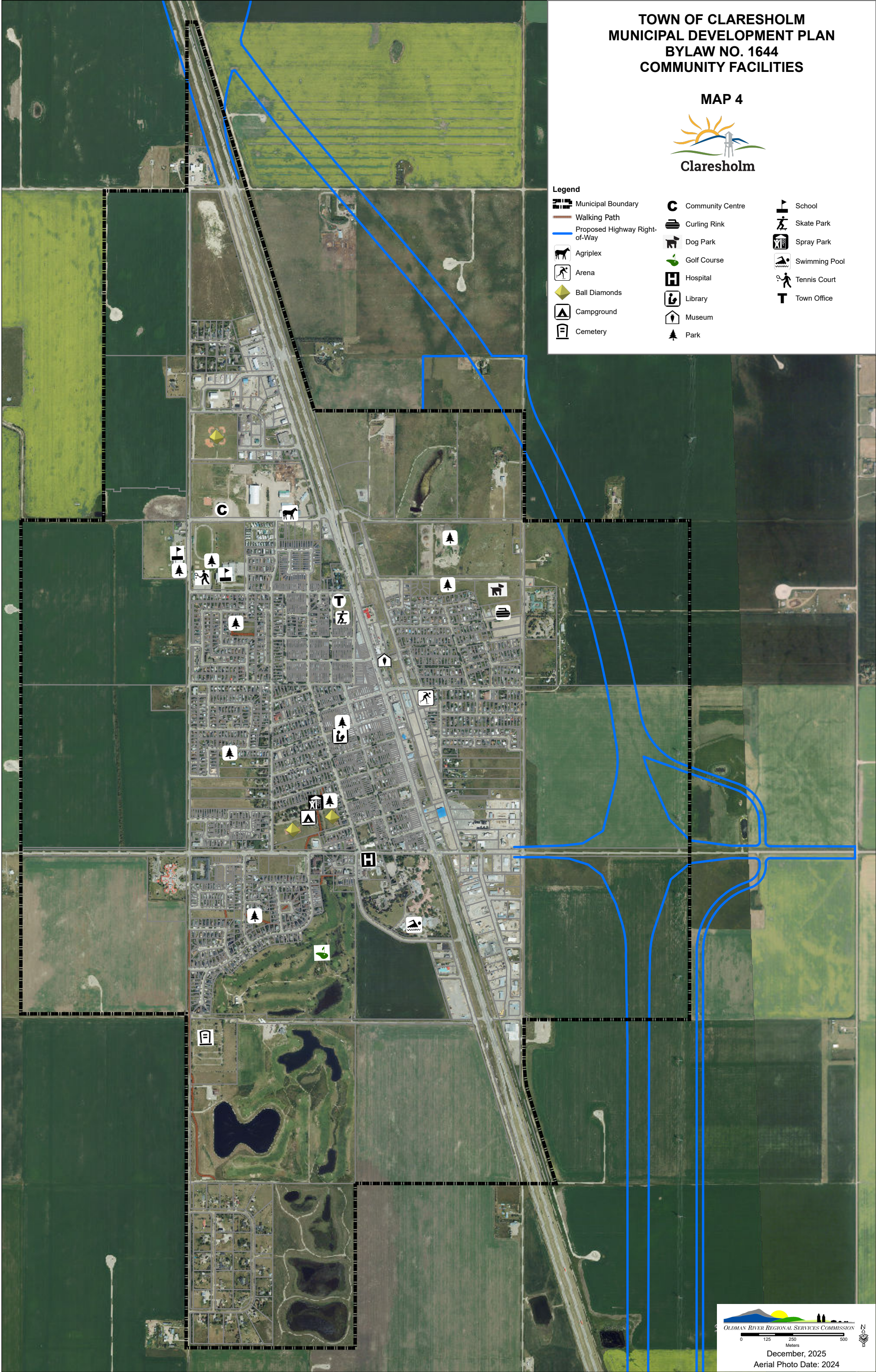
**TOWN OF CLARESHOLM  
MUNICIPAL DEVELOPMENT PLAN  
BYLAW NO. 1644  
COMMUNITY FACILITIES**

**MAP 4**



**Legend**

Municipal Boundary	Community Centre	School
Walking Path	Curling Rink	Skate Park
Proposed Highway Right-of-Way	Dog Park	Spray Park
Agriplex	Golf Course	Swimming Pool
Arena	Hospital	Tennis Court
Ball Diamonds	Library	Town Office
Campground	Museum	
Cemetery	Park	

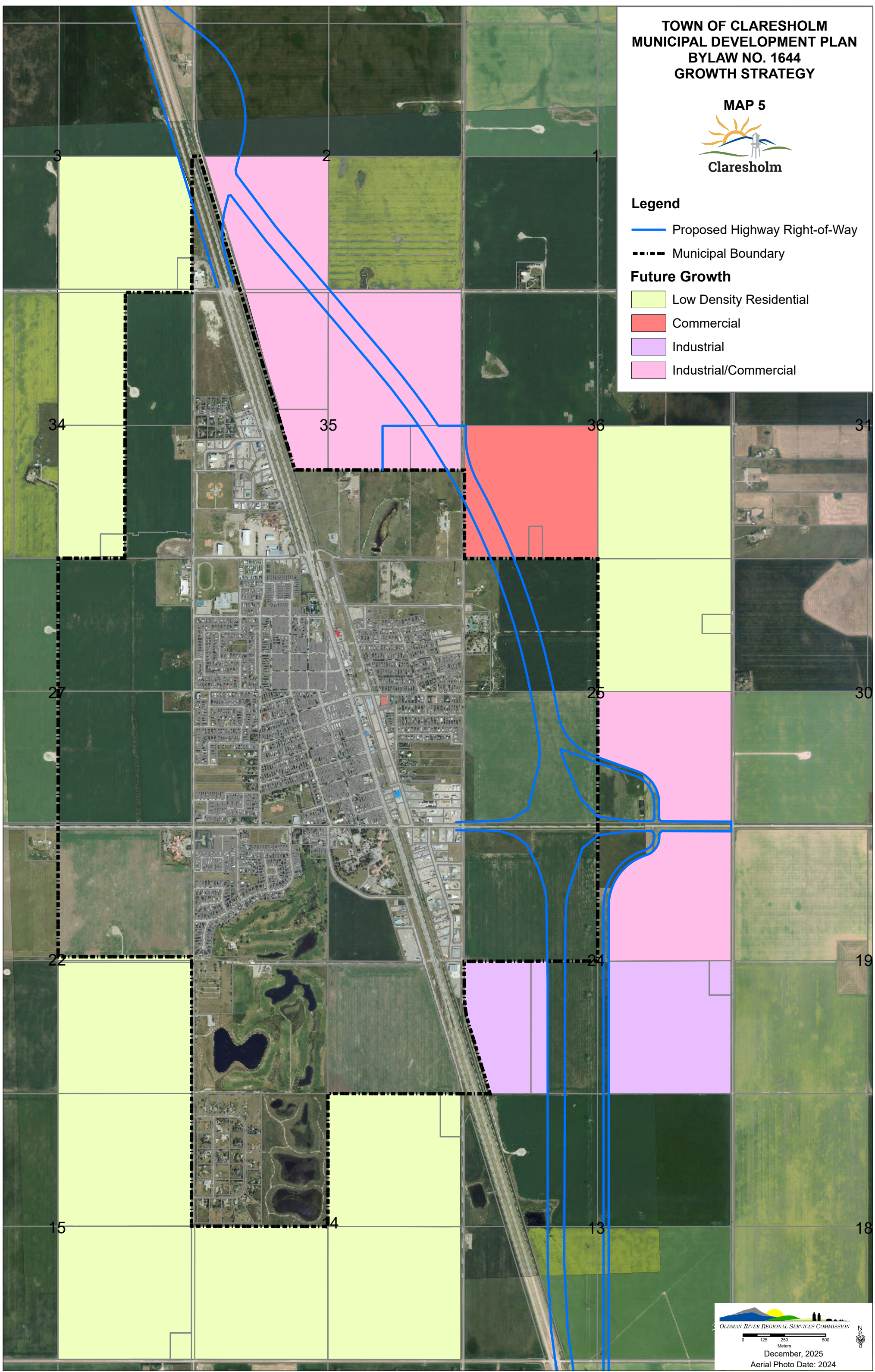


TOWN OF CLARESHOLM  
MUNICIPAL DEVELOPMENT PLAN  
BYLAW NO. 1644  
GROWTH STRATEGY



**Legend**

- Proposed Highway Right-of-Way
- - - Municipal Boundary
- Future Growth**
- Low Density Residential
- Commercial
- Industrial
- Industrial/Commercial

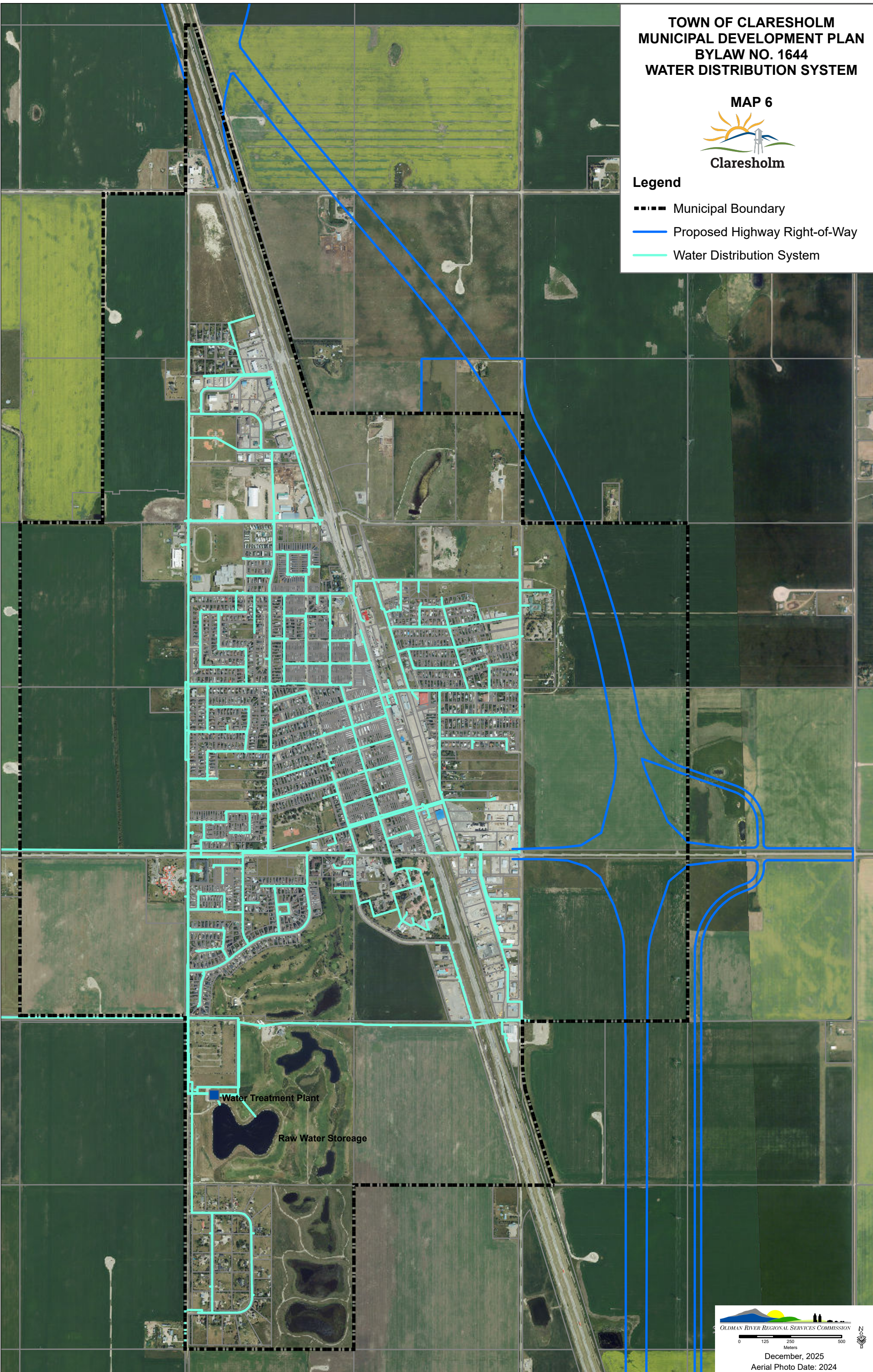


TOWN OF CLARESHOLM  
MUNICIPAL DEVELOPMENT PLAN  
BYLAW NO. 1644  
WATER DISTRIBUTION SYSTEM



Legend

- Municipal Boundary
- Proposed Highway Right-of-Way
- Water Distribution System



Water Treatment Plant  
Raw Water Storage

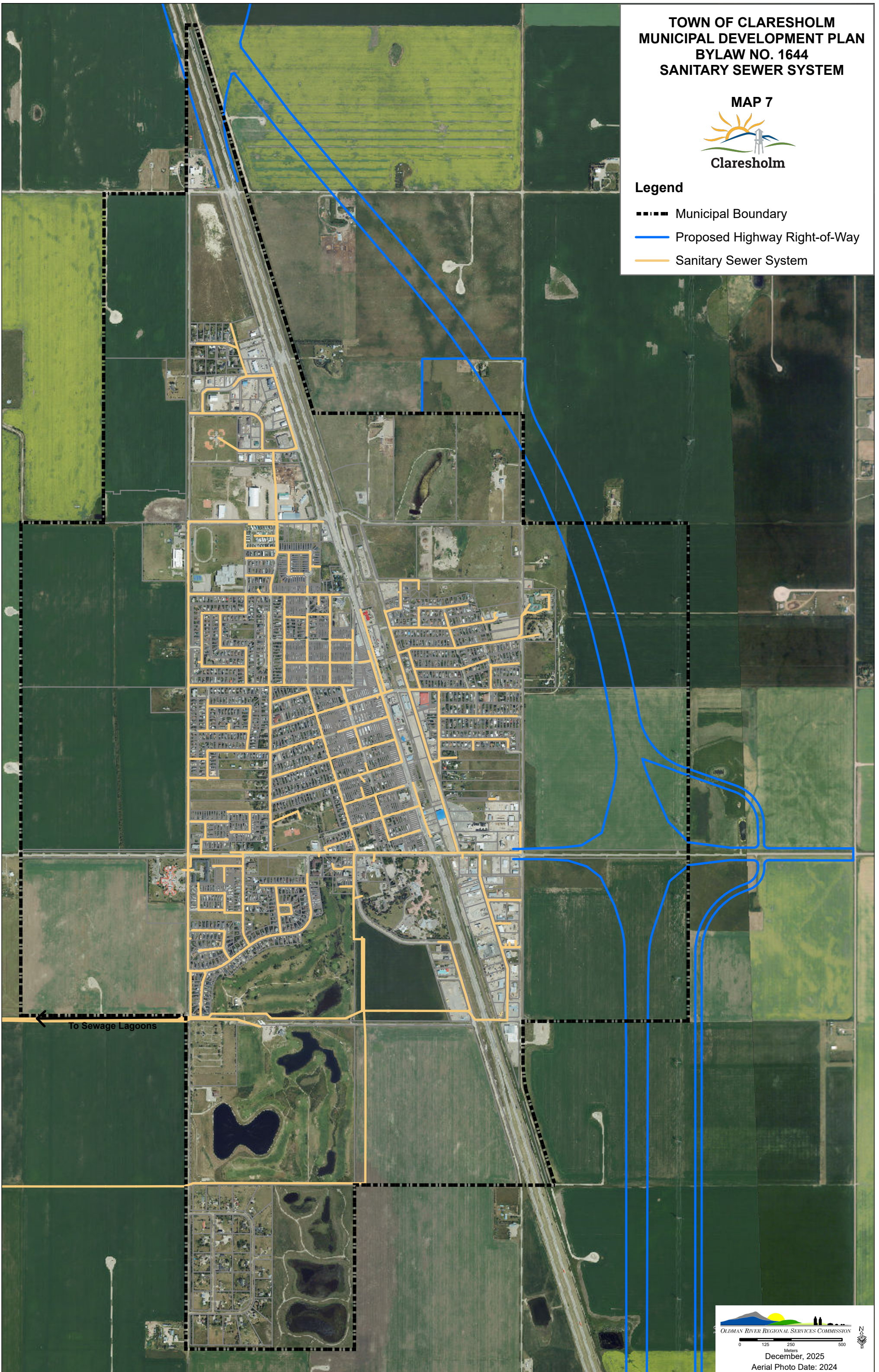
TOWN OF CLARESHOLM  
MUNICIPAL DEVELOPMENT PLAN  
BYLAW NO. 1644  
SANITARY SEWER SYSTEM

MAP 7



Legend

- Municipal Boundary
- Proposed Highway Right-of-Way
- Sanitary Sewer System



To Sewage Lagoons

TOWN OF CLARESHOLM  
MUNICIPAL DEVELOPMENT PLAN  
BYLAW NO. 1644  
STORM SEWER SYSTEM

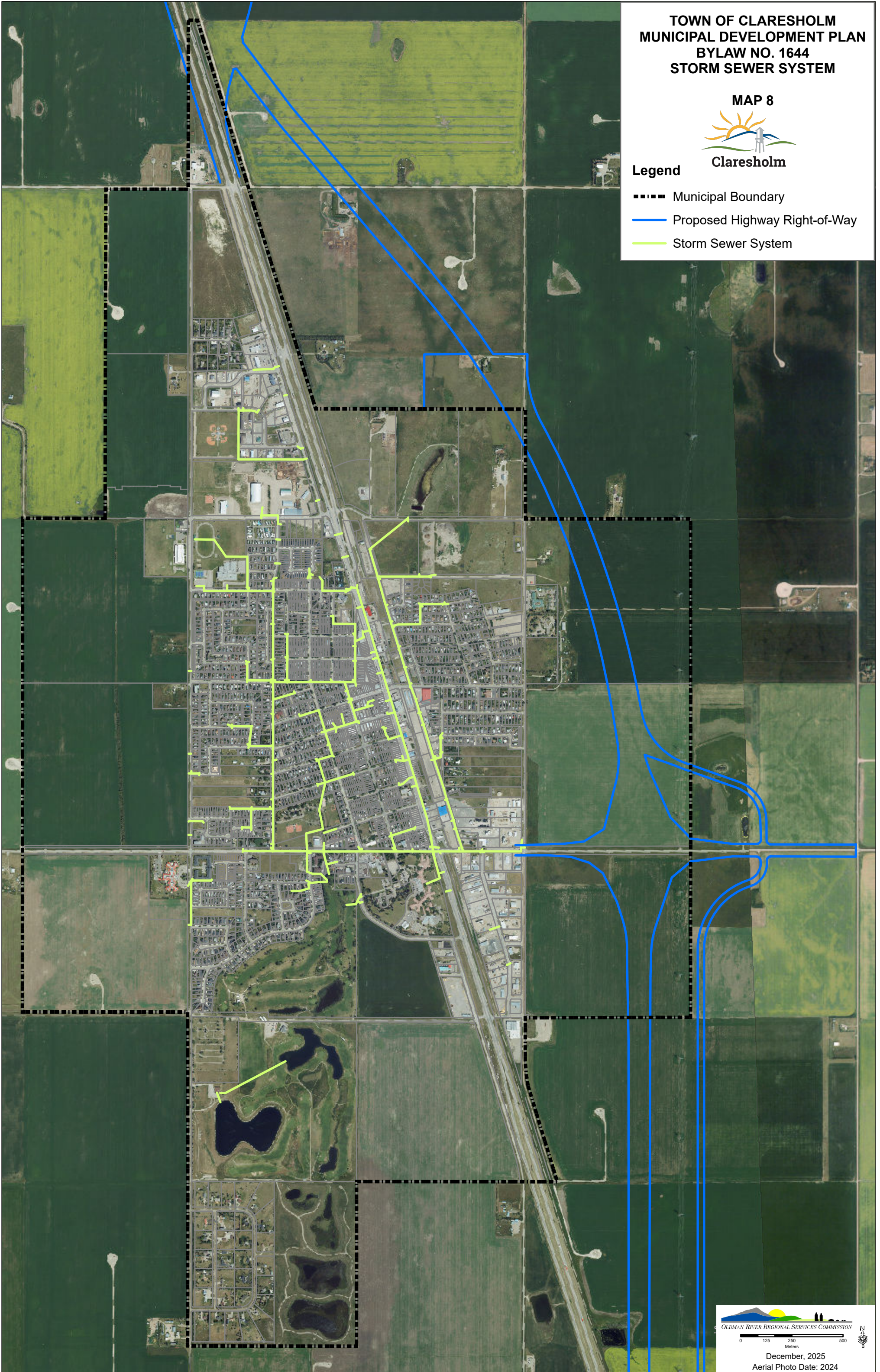
MAP 8



Claresholm

Legend

- Municipal Boundary
- Proposed Highway Right-of-Way
- Storm Sewer System



December, 2025  
Aerial Photo Date: 2024

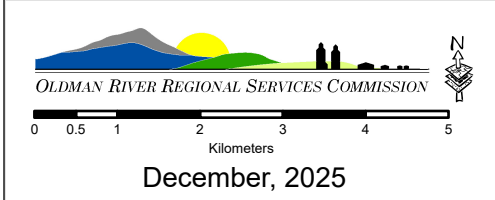
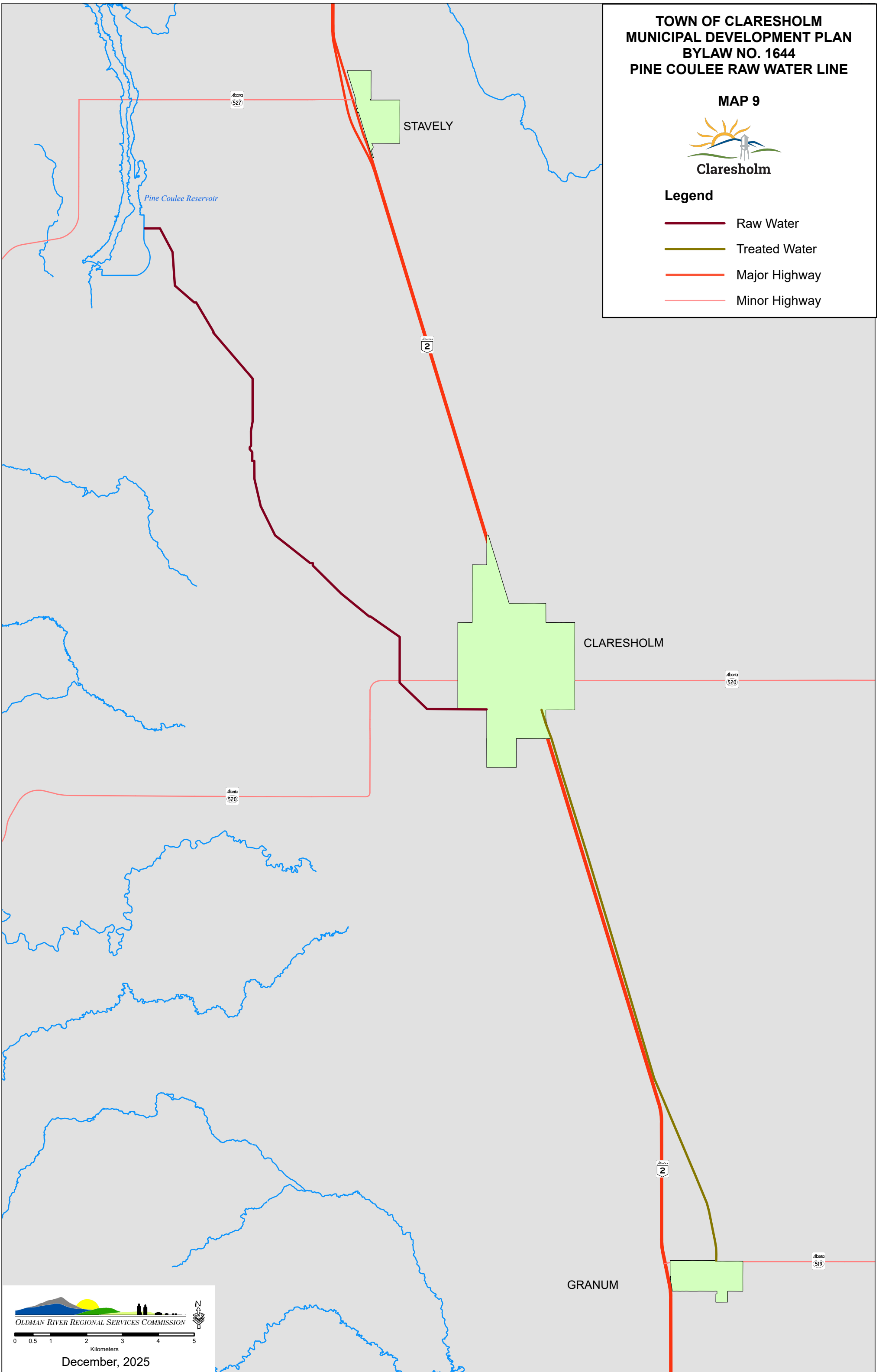
**TOWN OF CLARESHOLM  
MUNICIPAL DEVELOPMENT PLAN  
BYLAW NO. 1644  
PINE COULEE RAW WATER LINE**

**MAP 9**



**Legend**

- Raw Water
- Treated Water
- Major Highway
- Minor Highway



**OLDMAN RIVER REGIONAL SERVICES COMMISSION**

0 0.5 1 2 3 4 5  
Kilometers

December, 2025

TOWN OF CLARESHOLM  
MUNICIPAL DEVELOPMENT PLAN  
BYLAW NO. 1644  
ROAD HIERARCHY

MAP 10



Clareholm

Legend

- Municipal Boundary
- Proposed Highway Right-of-Way
- Arterial
- Major Collector
- Minor Collector
- Proposed Arterial
- Proposed Major Collector
- Proposed Minor Collector

