

# EXISTING SITE CONDITION

TOWN OF CLARESHOLM MUNICIPAL BUILDING

2ND ST WEST

VARIOUS TREES TO WEST & SOUTH

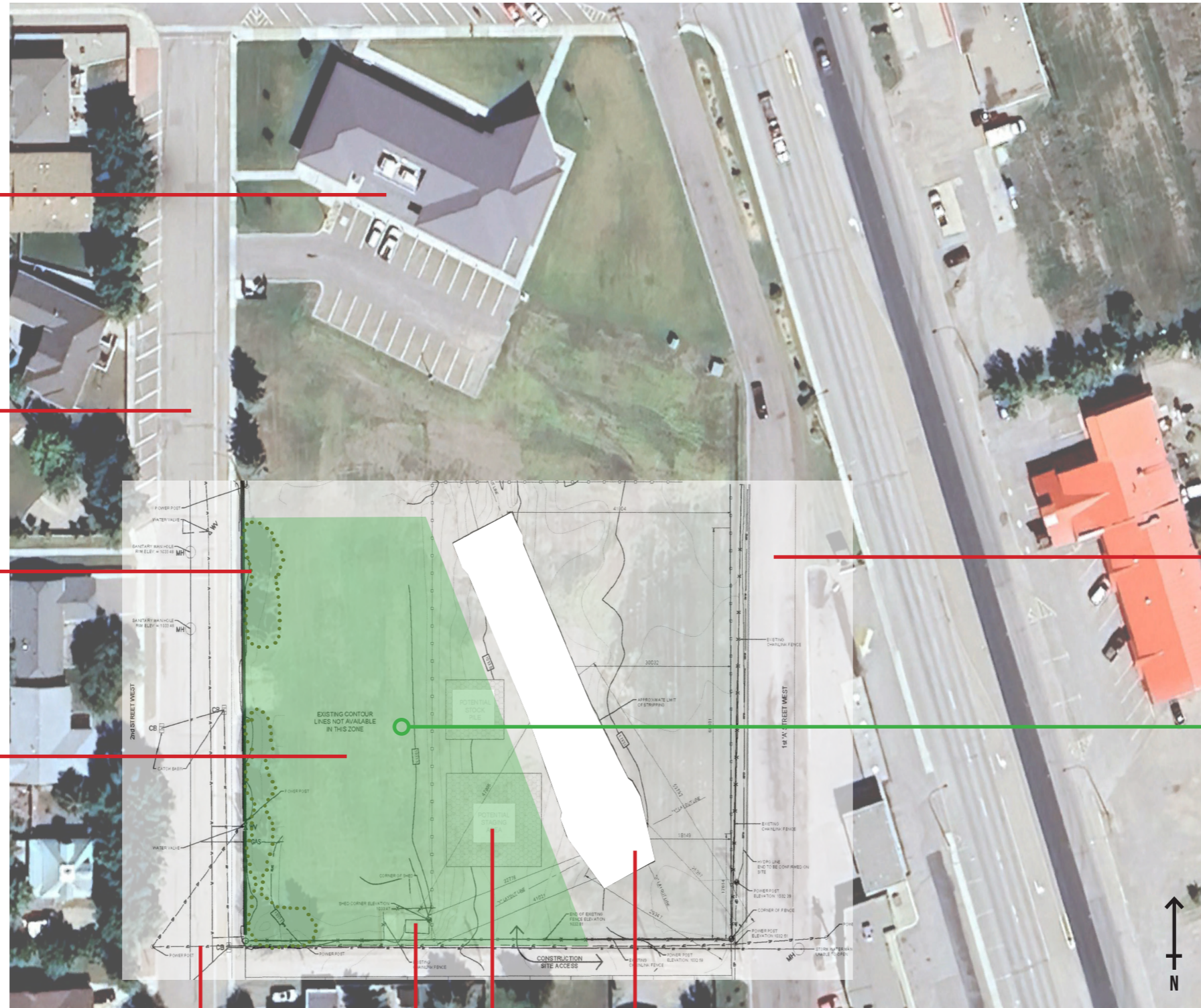
SITE OF DEMOLISHED SCHOOL

VARIOUS POWER LINE & POLES

EXISTING STRUCTURES - LOCATION TBC

RECLAIMED STOCKPILE LOCATIONS FROM SKATEPARK CONSTRUCTION

FOOTPRINT OF EXISTING SKATEPARK



1ST 'A' STREET WEST

PROPOSED SITE EXTENTS ~3600M2

ASPHALT PUMP TRACK, CLARESHOLM

TOWN OF CLARESHOLM MUNICIPAL BUILDING

2ND ST WEST

TREE BUFFER TO WEST RETAINED

SAFETY SETBACKS 3M TO NORTH EDGE, 6M TO SKATEPARK, 7M TO WEST & SOUTH

GAS LINE EXTENTS & CAP LOCATION TBC

TREE BUFFER TO SW RETAINED

POWER LINE POLE AND WIRE APPROACH DISTANCES TBC

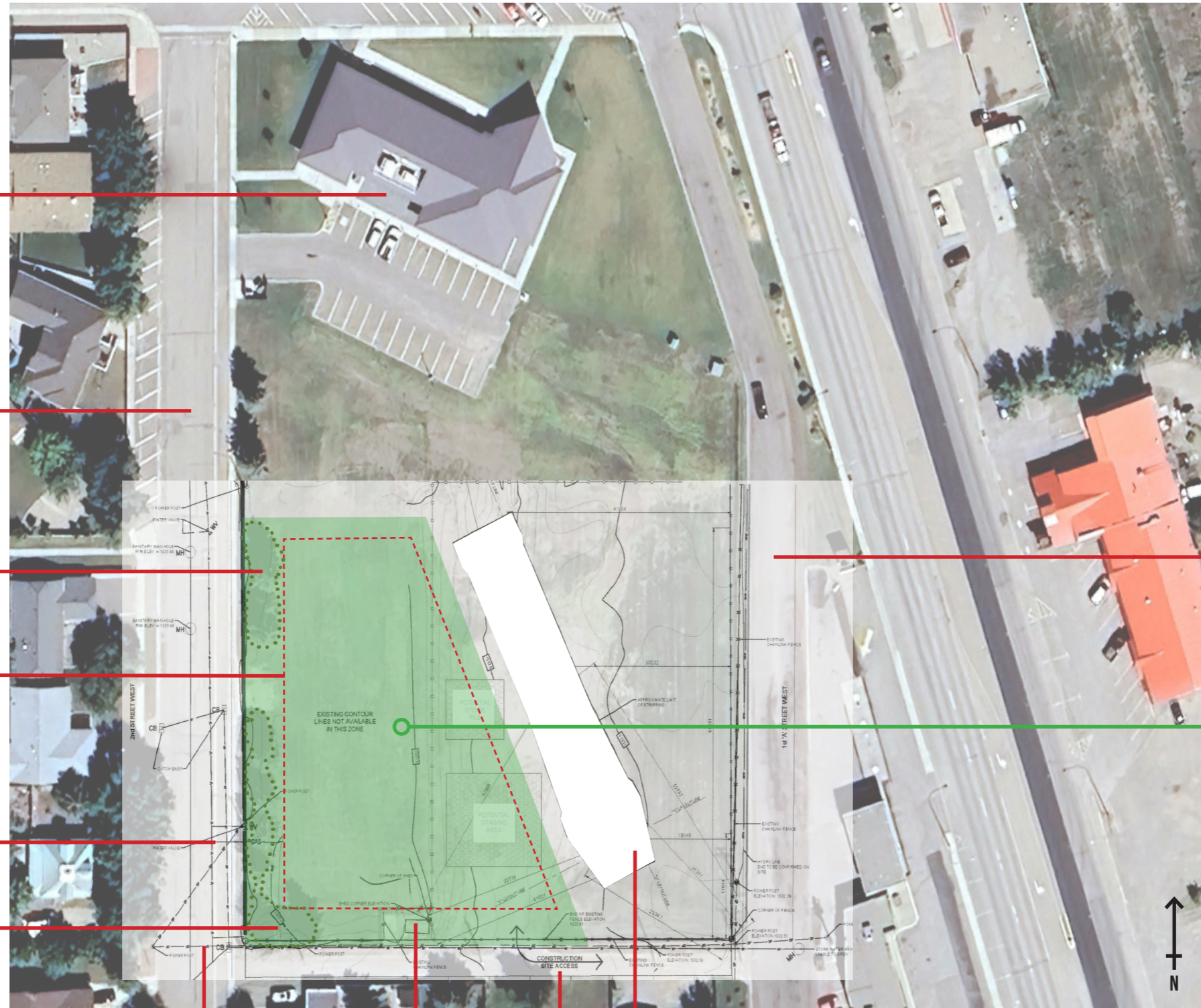
EXISTING STRUCTURES - LOCATION TBC

POSSIBLE SITE ACCESS LOCATION

FOOTPRINT OF EXISTING SKATEPARK

1ST 'A' STREET WEST

PROPOSED SITE EXTENTS WITHIN SAFETY BUFFER ~2500M<sup>2</sup>



6.3.1 - CONCEPT C

205M TOTAL TRACK LENGTH.

45M BEGINNER LOOP ALLOWS FOR SEPERATE TRACK USE CONCURRENT WITH INTERMEDIATE / ADVANCED USER TRACKS. BEGINNER TRACK CAN BE USED IN BOTH DIRECTIONS WHEN USER NUMBERS ALLOW.

160M REVERSIBLE INTERMEDIATE TRACK WITH INTERMEDIATE FEATURES OF VARIOUS TYPES. TRANSFER OPTIONS BETWEEN STRAIGHTS IN TWO LOCATIONS, USE AS A FIGURE OF MULTIPLE FIGURES OF EIGHT, AND ADDITIONAL INTERMEDIATE TO BEGINNER TRACK TRANSFER LINES POSSIBLE FOR ADDITIONAL INTEREST. BERM TO BERM TRANSFER LINES FOR ADVANCED USERS, MULTIPLE LEFT & RIGHT BERMS, MULTIPLE FEATURE TYPES AND SIZES.

BERMS @ 1,100MM HEIGHT.

75M<sup>2</sup> START/FINISH/REST PAD AREA WITH ACCESS RAMP TO NORTH AND SOUTH.

320M<sup>2</sup> ASPHALT RIDING TRACK AREA.

6.3.2 CONCEPT C BUDGET

STAGE/DETAIL	NOTE	PERCENTAGE OF BUDGET	\$ VALUE
DESIGN	DETAILED DESIGN & IFC/PERMIT DRAWINGS	3%	\$7687.5
PROFESSIONAL FEES	GEOTECHNICAL	2%	\$5125
CONSTRUCTION LABOUR	BT STAFFING	30%	\$76875
MOBILISATION, SAFETY, WELFARE	ACCOMMODATION, PER DIEMS, SITE FENCE, TOILET	8%	\$20500
CONSUMABLES	FUEL, GREASE, MISC. SUPPLIES	2%	\$5125
EQUIPMENT	EXCAVATOR, SKID STEER, COMPACTION	17%	\$43562.5
MATERIALS	AGGREGATE & ASPHALT	30%	\$76875
LANDSCAPING	TOP SOIL AND SOD	8%	\$20500
			\$256250

**CLARESHOLM SPATIAL RELATIONSHIP CONCEPT SKATEPARK AND PUMP TRACK PARK**

pedestrian flows

gathering area/plaza area with picnic table/seating areas

realigned pump track

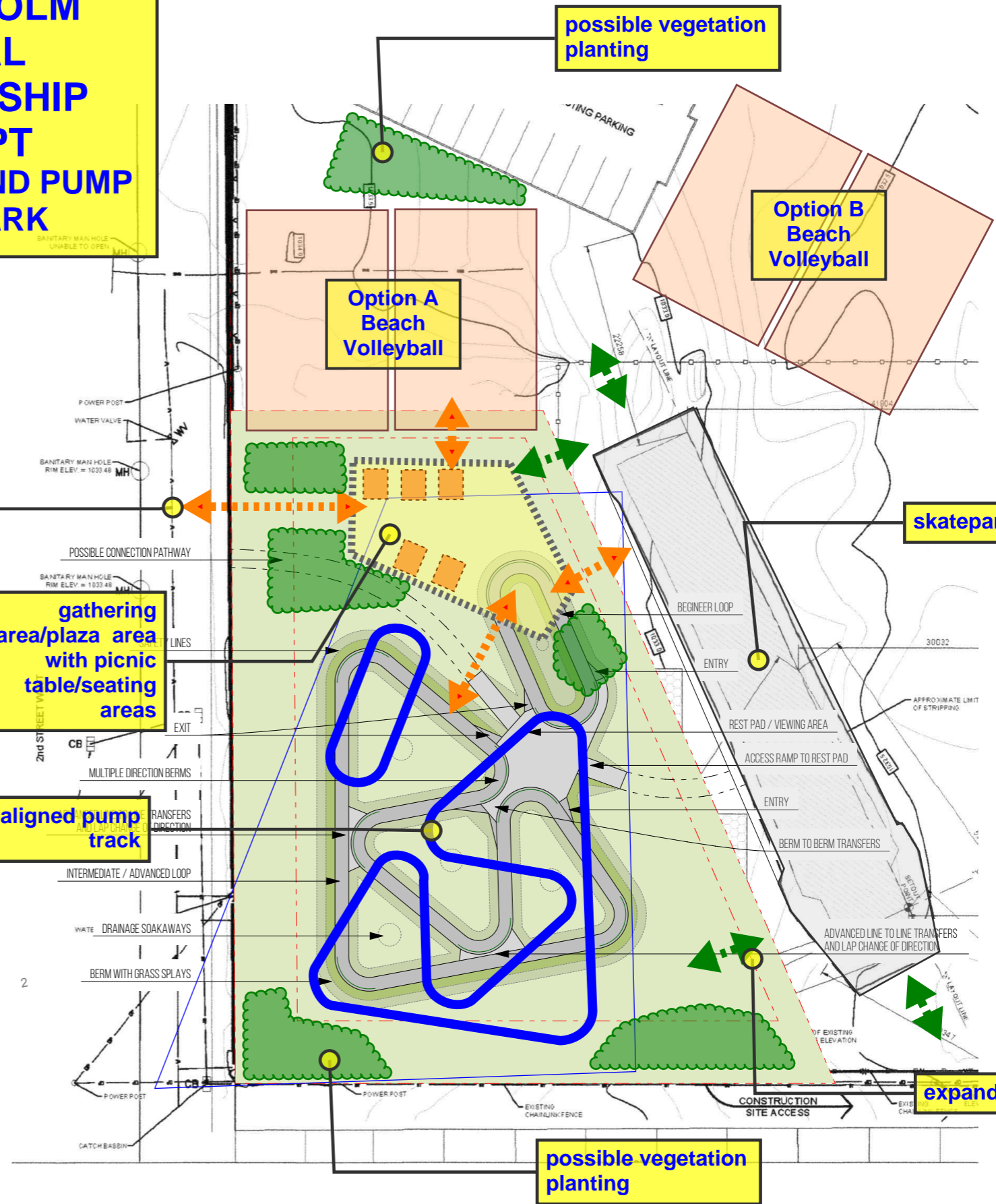
possible vegetation planting

Option B Beach Volleyball

Option A Beach Volleyball

skatepark

expand earthworks



ASPHALT PUMP TRACK, CLARESHOLM